

QCAP SDK Communication ONVIF Development with HIKVISION IP camera Guide

◆ Overview

In this document, we will demo and guide developer how to implement QCAP SDK of client function with HIKVISION IP camera.

◆ Test software

ONVIF Device Manager v2.2.250

DS-2CD3Q10FD-1W

<http://sourceforge.net/projects/onvifdm/>

zu

zai

自在

親膚羽感

精品保暖衣

舒適保暖28℃ 更勝喀什米爾羊毛

IP Transit \$3/Mbps

For Your Network In

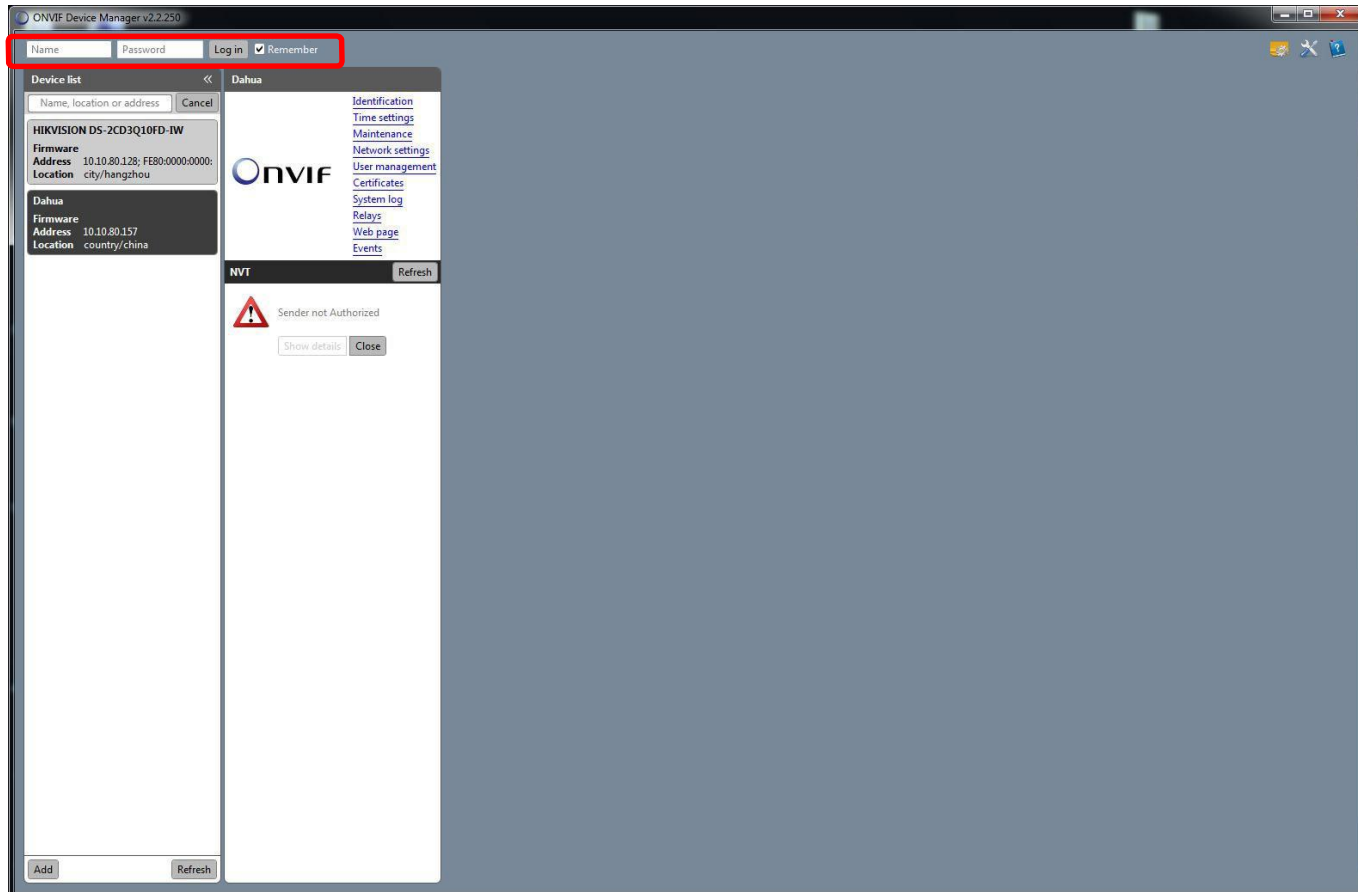
Tokyo, Hong Kong, Singapore

IPv6+IPv4 Global Backbone

ENTER SITE

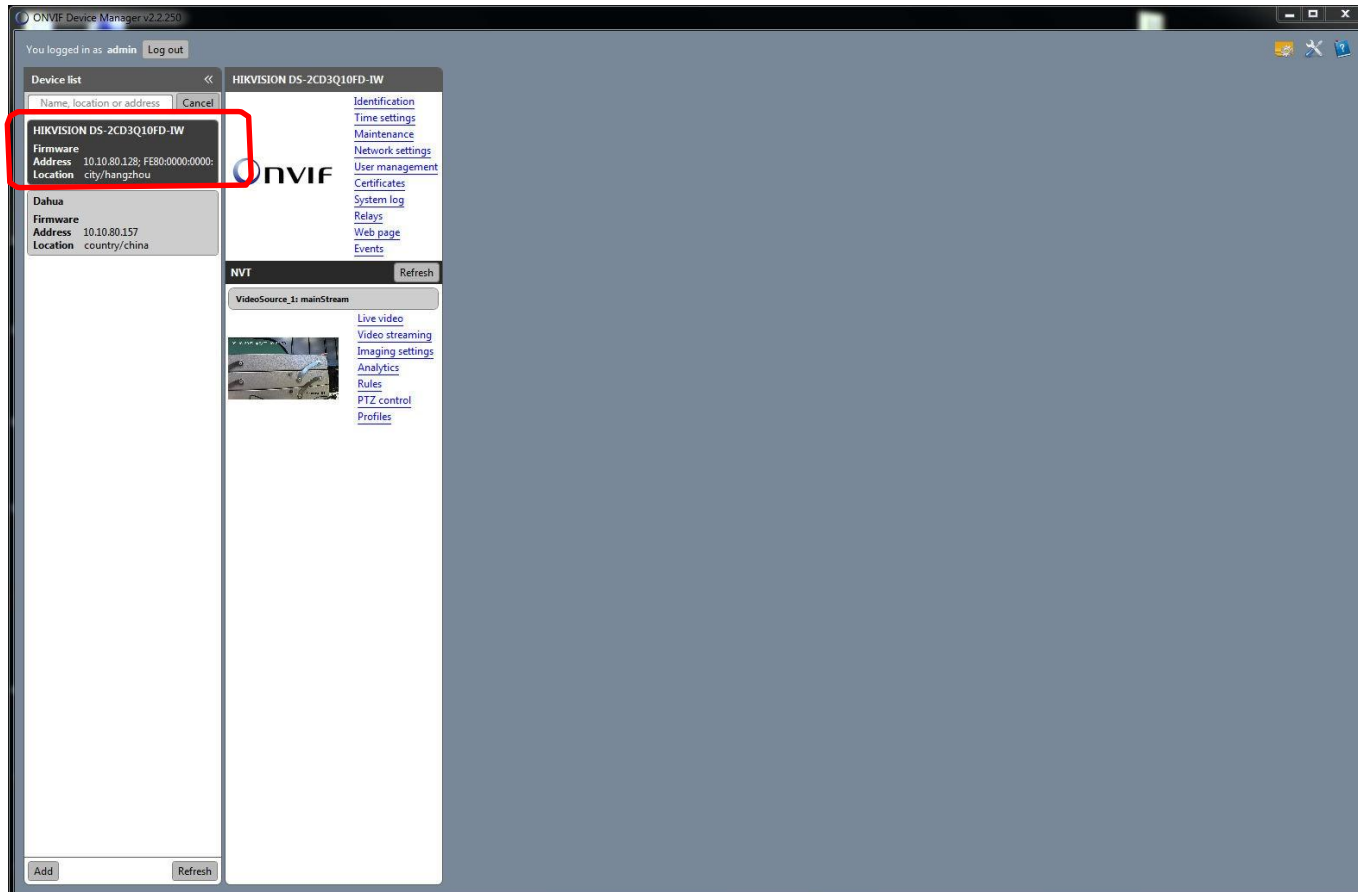
Communication ONVIF with HIKVISION IP camera Application

1. Enter user account and password of HIKVISION IP camera.



Communication ONVIF with HIKVISION IP camera Application

2. When ONVIF Device Manager has been launched. ONVIF server is automatically detected as shown in below.



Communication ONVIF with HIKVISION IP camera Application

3. Check live video from active video Channel Profile and then copy RTSP URL address.



Communication ONVIF with HIKVISION IP camera Application

1. The sample "SC510.PRODUCTS\RTSP.SC510N1.VC6\NetReceiver" demo how to use implement QCAP SDK of client function with HIKVISION IP camera.

